

This cartoon doesn't move me.

THE INCREDIBLE WORLD OF

Shortcuts

by Jeff Harris

This edition of Shortcuts is sponsored by the Drawing Borg.

Persistence is futile.

In the early 1800s, a new form of entertainment was born. People began watching "moving pictures" on inventions bearing fancy names like the "phenakistoscope" or the "zoetrope."

Today, we refer to moving pictures as animation, and it is still a very popular form of entertainment. In addition to entertaining us, animation is also used to solve crimes, recreate events, explore other worlds, educate, demonstrate and to generally make the impossible seem possible.

STOP LOOKING AT ME!

Cartoon eyes have taken over this cartoon. Can you find all 12 pairs of cartoon eyes located throughout it?

For more information on cartooning, go to your local library and check out these books:

"Of Mice and Magic-A History of American Animated Cartoons" by Leonard Maltin (McGraw-Hill Book Co.) or "Cartoon Animation" by Preston J. Blair (Walter Foster Publishing).

It takes 24 frames of film to make one second of animation.

Why did the artist put a banana in his cartoon? He slipped it in because it had a-peel.

The famous "ACME" company featured in many Warner Brothers cartoons was first used in "Porky's Poppa," which was released in 1938.

WORD SEARCH

Can you find the hidden words? Search carefully because some words are backward or diagonal.

ZOETROPE	VISION	ACME
PICTURES	FRAME	PEGS
CARTOON	MOVIE	FILM
STRETCH	IMAGE	BOB
ANIMATE	DRAW	CEL
SQUASH	MOVE	TNK

V Z O E T R O P H A H A V
 F I L M E L F H A S I
 T R S V R T K A E S Q E S
 Q X A O A N C V G A Z R I
 E G A M I M O E Z U R U O
 P I T E M P O Q U T N
 A N R H C T E R T S D C L
 A C Z Q B I R T C R I S
 Z O E T R O P E A S A P Z
 P E A L O W B W O O N C T

ANIMATION

Real CHARACTERS

A character named Fantoche was created by Emile Cohl in the early 1900s. Fantoche is considered by many to be the first character to star in a series of animated films.

During the 1920s, the most popular cartoon character was a clever feline named "Felix the Cat."

In 1942, Donald Duck starred in "The New Spirit," a war-time animated film that actually convinced millions of Americans to pay their taxes to help support the war effort.

"Snow White and the Seven Dwarfs" was released in 1938, making it the first full-length animated film.

Unlike actors, cartoon characters can be squashed and stretched like rubber bands to emphasize their movements.

Most of the early cartoons contained a lot of violence.

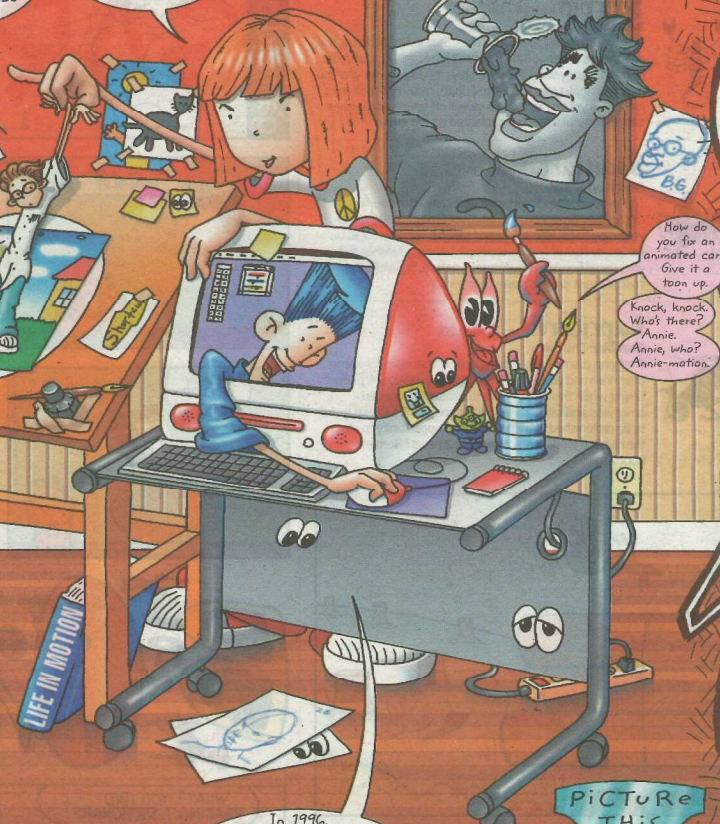
PERSISTENCE PAYS OFF

The illusion of animation is possible because of something called "persistence of vision." This occurs when we are shown an image and then that image is quickly taken away. Our eyes "remember" the image momentarily even though it is no longer there.

To achieve the effect of animation, a series of images are shown one at a time, in rapid succession. Our eyes remember one image as the following image is being shown. Any changes between the images are seen as movement.

Popeye was created in 1929 and first appeared on television in 1957.

"Scooby Doo, Where Are You?" was originally called "Mysteries Five." When it was first pitched in 1969, it was rejected because it was too scary.



How do you fix an animated car? Give it a toon up.

Knock, knock. Who's there? Annie. Annie, who? Annie-motion.

The average animated movie runs for around 80 minutes and requires more than 115,000 individual frames.

In 1996, "Toy Story" became the first full-length animated film to be rendered entirely using computers.

MULTIPLE PERSONALITIES

The cartooning team of William Hanna and Joseph Barbera created some of the most memorable characters in cartoon history, including: The Flintstones, Scooby Doo, Jonny Quest, Magilla Gorilla, The Jetsons, Tom and Jerry, Yogi Bear and Huckleberry Hound.

Mel Blanc is sometimes referred to as "the man of a thousand voices." His voice was used for many characters, including: Bugs Bunny, Daffy Duck, Foghorn Leghorn, Pepe le Pew, Porky Pig, Speedy Gonzales, Sylvester, Tweety, and Yosemite Sam.

The thaumatrope was invented in the early 1800s. One version of this invention was a two-sided disk with a drawing of a bird on one side and a drawing of an empty cage on the other. When the thaumatrope was twirled, the two drawings magically merged into a single image of a bird in a cage.

In 1914, J. R. Bray and Earl Hurd invented a method of inking on clear celluloid sheets to produce drawings that could be photographed over any background. Using animation "cells" is a technique that is still in use today.

Raoul Barre invented the peg system. This system used small pegs that matched up to holes punched in the drawing paper. When the holes in the paper were aligned with the pegs, all of the drawings matched up perfectly.

Email us at: jeff@shortcuts.com